

Using demo

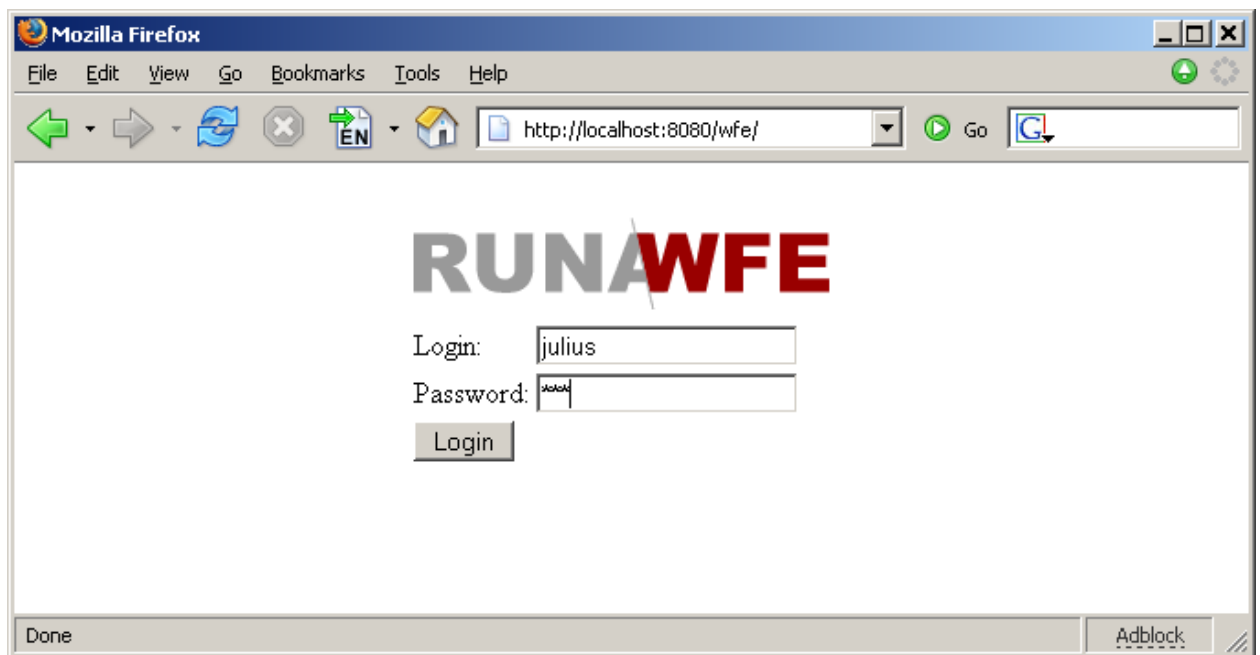
Starting demo

1. Surf to <http://wfdemo.runa.ru/wfe/>
2. Enter login and password

Demo accounts:

Login	Full name
julius	Gaius Julius Caesar
nero	Nero Claudius Caesar
cleopatra	Cleopatra VII The Daughter of the Pharaoh
caligula	Gaius Iulius Germanicus
tiberius	Tiberius Claudius Drusus
marcus	Marcus Aurelius Antoninus
gaiua	Gaiua Flavius Valerius Constantinus
attila	Attila the King of Huns

The password for demo actors is 123



Demo groups:

Group	Group members
manager	<ul style="list-style-type: none">●julius●nero
human resource	<ul style="list-style-type: none">●cleopatra

bookkeeper	<ul style="list-style-type: none"> ●caligula ●tiberius
staff	<ul style="list-style-type: none"> ●marcus ●gaiua ●attila
all	All demo actors

Menu items:

- System – allows to:
 - ◆Manage system permissions
- Process Definitions – allows to:
 - ◆Start business process
 - ◆View permissions on business process definition
 - ◆View the business process graph
- Executors – allows to:
 - ◆Manage executor permissions
 - ◆Manage executor properties
- Process Instances – allows to:
 - ◆View process instance states and variables
- Tasks – allows to
 - ◆Work with actors tasks

Demo processes:

- over time work demo
- vacation demo
- business trip demo

Notes:

- Only managers (*julius, nero*) have the rights to start processes “over time work demo” and “business trip demo”.
- All demo actors can start the process “vacation demo”.
- The boss¹ of *gaiua* is *julius*, the boss of *marcus* and *attila* is *nero*.

Running demo processes

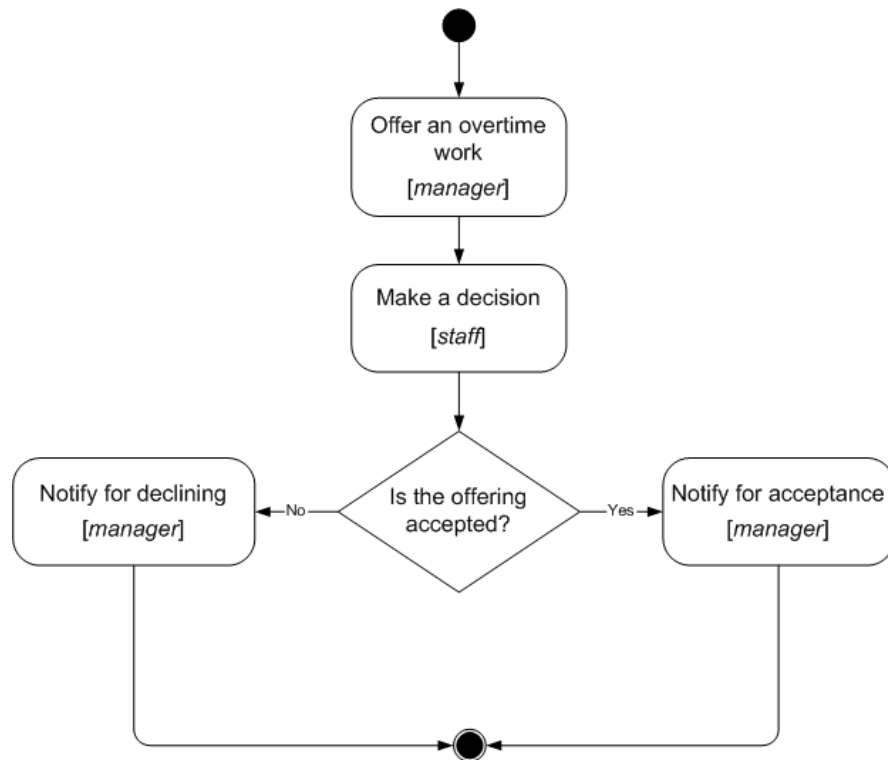
Over time work demo

Description:

Manager asks the employee for overtime work. The employee accepts or declines the proposal. After that the manager receives the notification of acceptance or rejection.

The business process graph:

¹ Organization function determines boss in “vacation demo” process.



How to play the business process:

1. Log in as member of manager group (e.g. julius)
2. Click menu item “Process Definitions”
3. Click “Start” for “over time work demo” button

Menu

- Task List
- Process Definitions
- Process Instances
- Executors
- System

Process Definitions

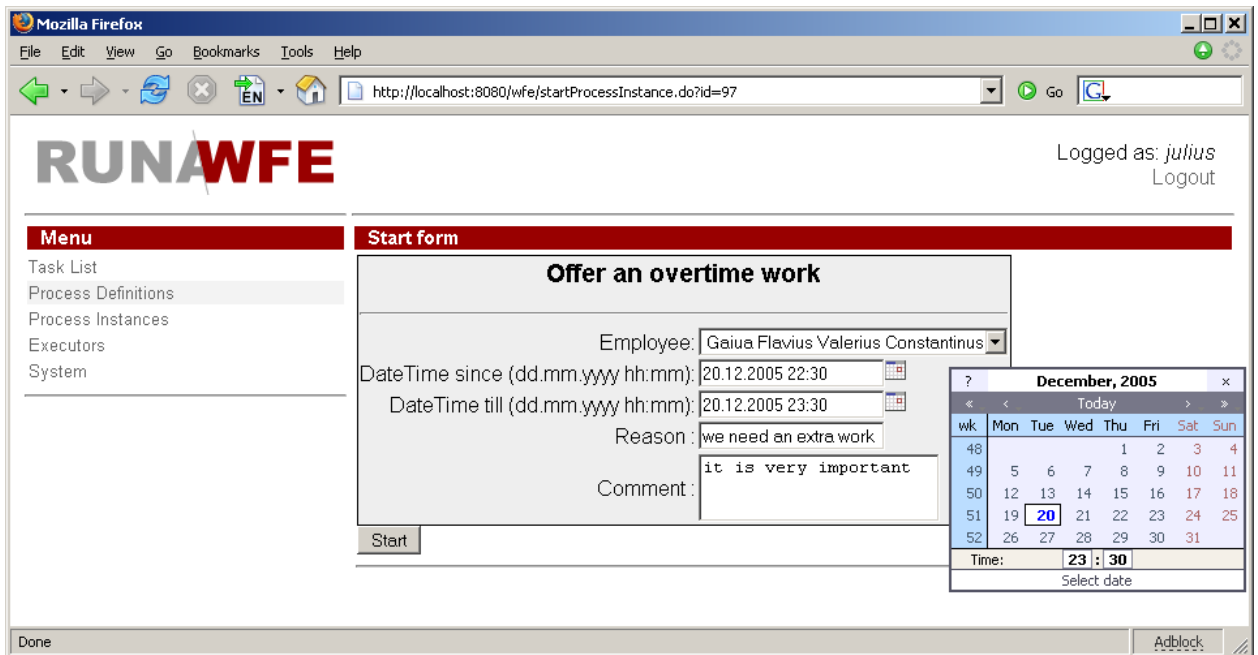
View: Default

		Name	Description	
<input type="checkbox"/>		business trip demo	The participants of this process are the members of the manager, staff, bookkeeper and human resource groups	Properties
<input type="checkbox"/>		over time work demo	The participants of this process are the members of the manager and staff groups	Properties
<input type="checkbox"/>		vacation demo	The participants of this process are the members of the manager, all and human resource groups	Properties

Undeploy

http://localhost:8080/wfe/startProcessInstance.do?id=97

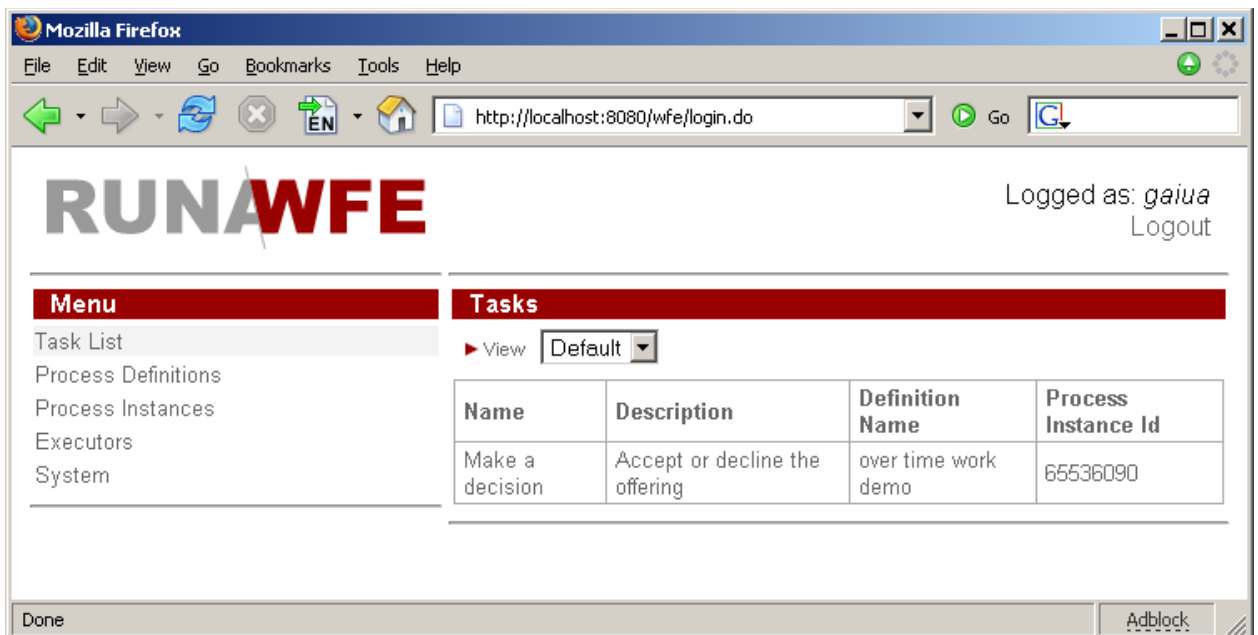
4. Start form will appear.
 - Choose an employee, which will receive proposal for an overtime work (e.g. Gaiua)
 - Enter the time interval for the overtime work (e.g. 20.12.2005 22:30 - 20.12.2005 23:30)
 - Fill the fields «reason» and «comment»



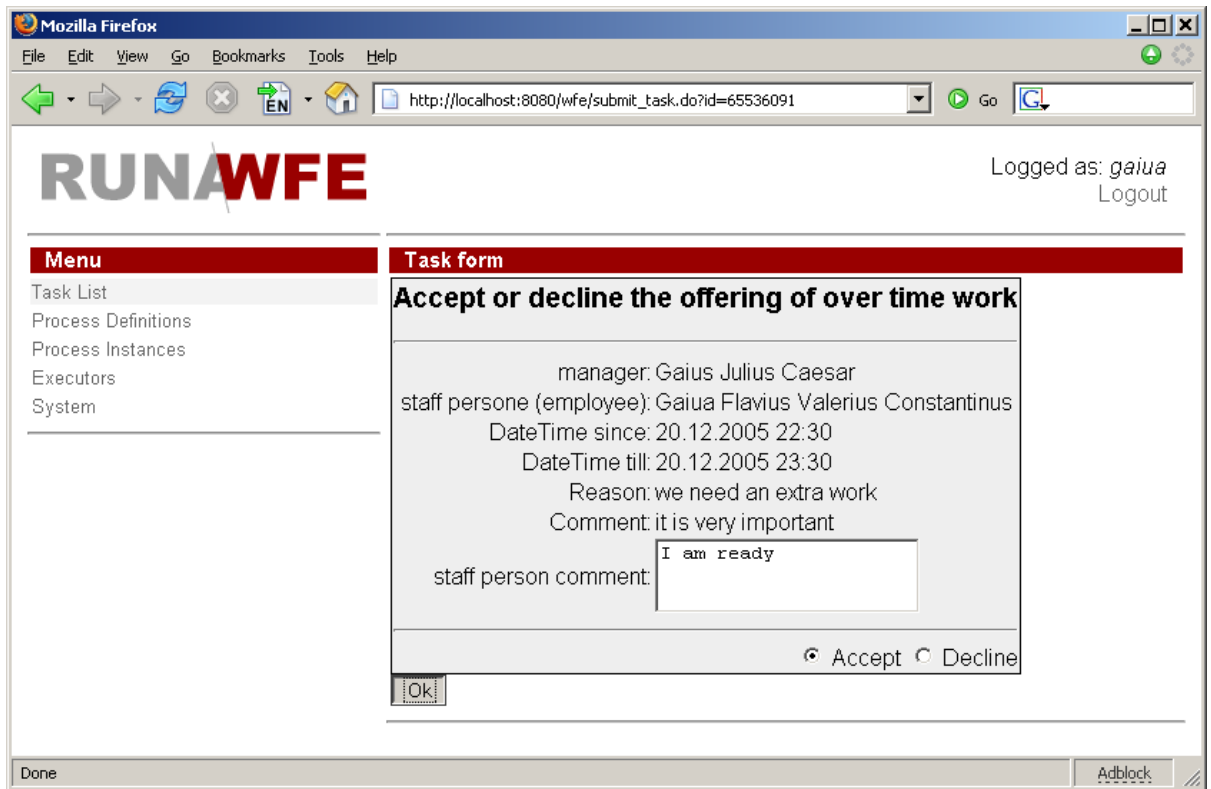
- Click “OK”

The new instance of “over time work demo” business process will be created and the employee (gaiua) will receive task.

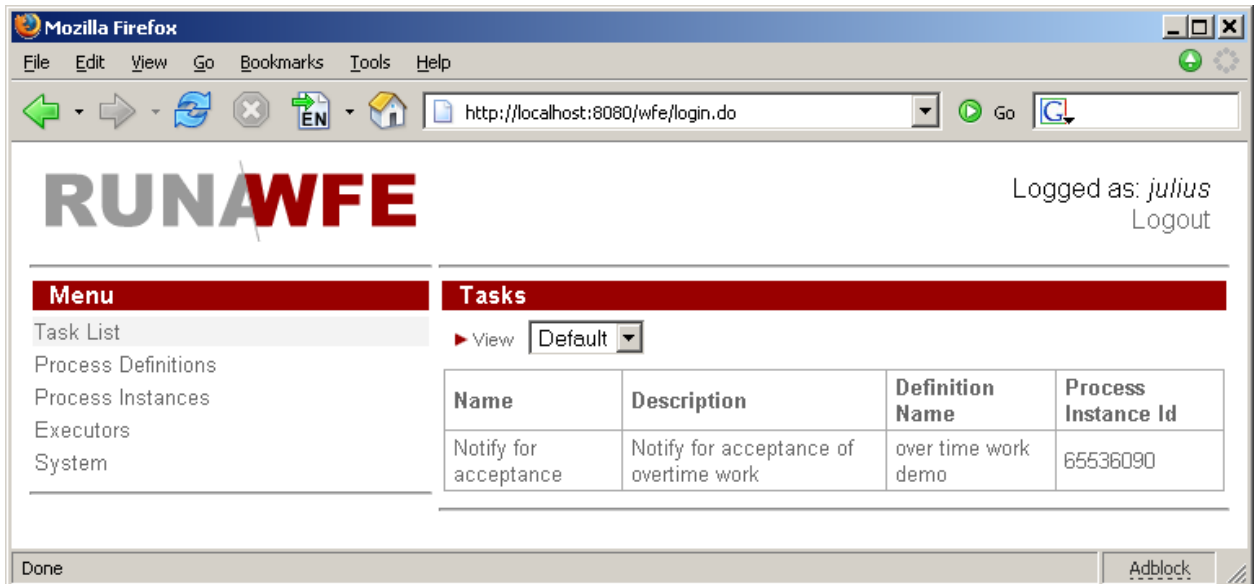
5. Click “Logout”
6. Log in as employee, selected on the start form (gaiua).
7. Click the “make a decision” task.



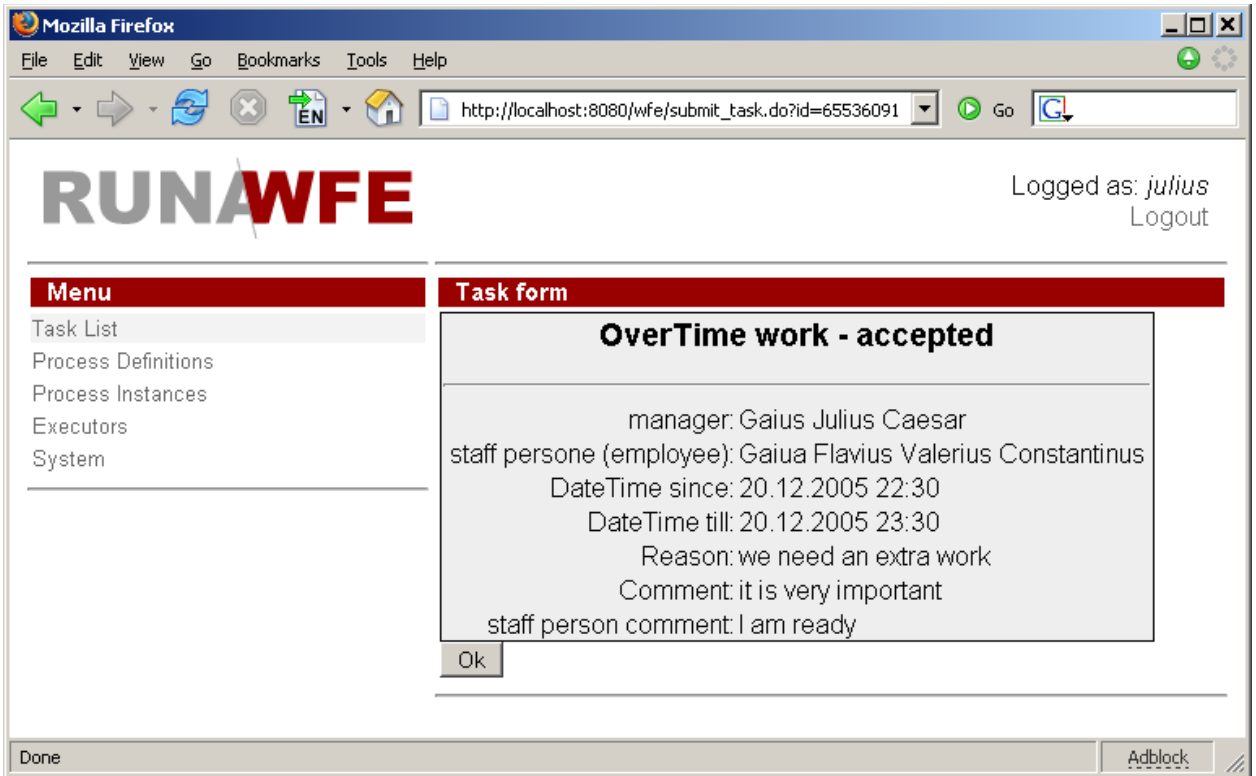
8. Choose “accept” or “decline” (e.g. “accept”), fill the «comment» field and click «OK».



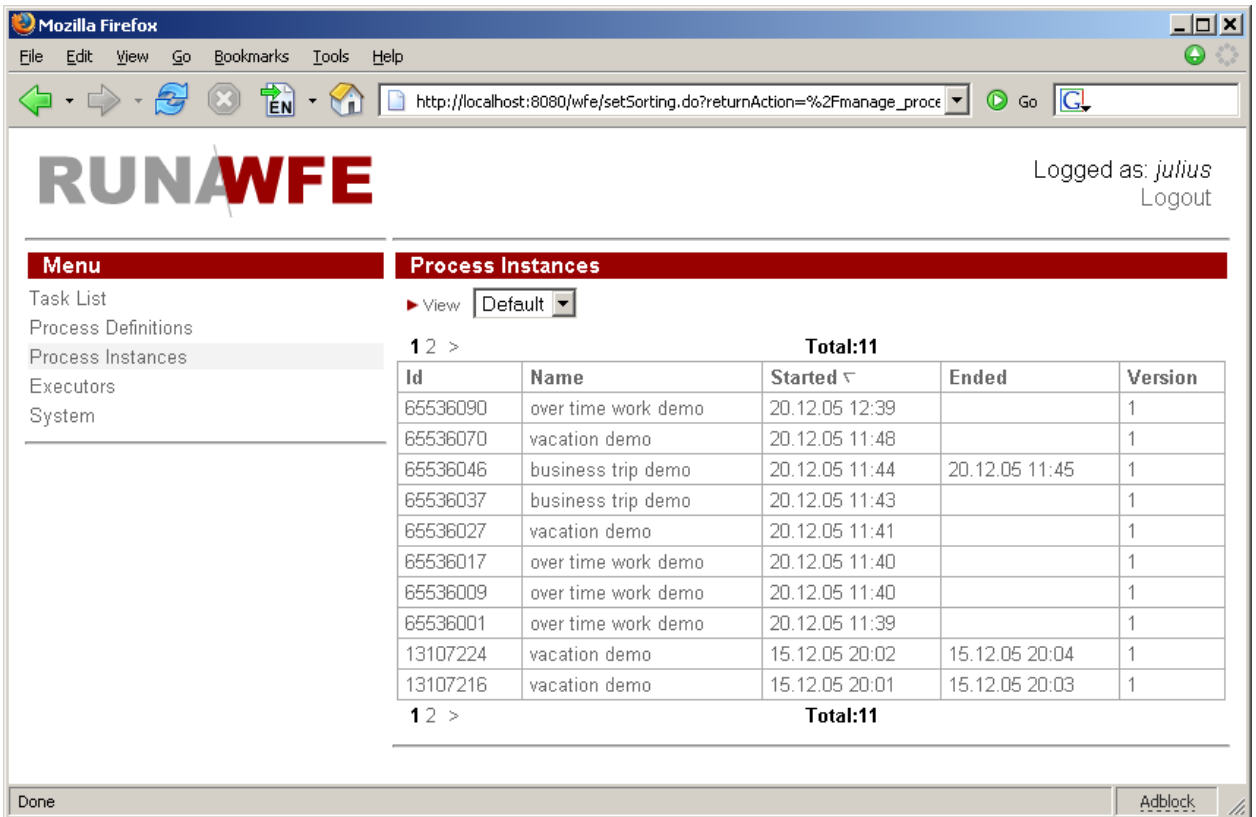
9. Logout
10. Log in as the actor, which started the process (julius)
11. Click on task “Notify for acceptance”.



12. By clicking “OK” you’ll finish the process.



Note. To monitor process click on “Process Instances” menu item



and then click on instance

Mozilla Firefox
 File Edit View Go Bookmarks Tools Help
 http://localhost:8080/wfe/manage_process_instance.do?id=65536090
 Logged as: *julius*
 Logout

RUNWFE

Menu
 Task List
 Process Definitions
 Process Instances
 Executors
 System

Process Instance

Name	over time work demo	
Id	65536090	
Version	1	
Started	20.12.2005 12:39	
<input type="button" value="Cancel"/>		

Process Swimlane List

Name	Assignment	Organization Function
staff	gaiua	
manager	julius	

Process Variable List

State Name	Variables	
	Name	Value
Notify for acceptance	since	Tue Dec 20 22:30:00 GMT+03:00 2005
	staffPersonDecision	true
	reason	we need an extra work
	staff person comment	I am ready
	comment	it is very important
	till	Tue Dec 20 23:30:00 GMT+03:00 2005

Permission Owners

	Name	Read	Update Permissions	Cancel Instance
<input checked="" type="checkbox"/>	all	<input checked="" type="checkbox"/>	<input type="checkbox"/>	<input type="checkbox"/>

Done

Note. To see the business process graph click on “Process Definitions” menu item

Mozilla Firefox
 File Edit View Go Bookmarks Tools Help
 http://localhost:8080/wfe/manage_process_definitions.do?tabForwardName=manage_def
 Logged as: *julius*
 Logout

RUNWFE

Menu
 Task List
 Process Definitions
 Process Instances
 Executors
 System

Process Definitions
 View

	Name	Description	
<input type="checkbox"/>	business trip demo	The participants of this process are the members of the manager, staff, bookkeeper and human resource groups	Properties
<input type="checkbox"/>	over time work demo	The participants of this process are the members of the manager and staff groups	Properties
<input type="checkbox"/>	vacation demo	The participants of this process are the members of the manager, all and human resource groups	Properties

Done

and click on process properties.

Mozilla Firefox
 File Edit View Go Bookmarks Tools Help
 http://localhost:8080/wfe/manage_process_definition.do?id=97
 Logged as: julius
 Logout

RUNWFE

Menu
 Task List
 Process Definitions
 Process Instances
 Executors
 System

Process Definition

Definition Name	over time work demo
Version	1
Description	The participants of this process are the members of the manager and staff groups

Process Graph

```

graph TD
  Start(( )) --> Offer([Offer an overtime work  
[manager]])
  Offer --> Decision([Make a decision  
[staff]])
  Decision --> IsAccepted{Is the offering  
accepted?}
  IsAccepted -- No --> Decline([Notify for declining  
[manager]])
  IsAccepted -- Yes --> Acceptance([Notify for acceptance  
[manager]])
  Decline --> End(( ))
  Acceptance --> End
  
```

Permission Owners

Name	Read	Update Permissions	Redeploy	Undeploy	Start	Read Instance	Cancel Instance
<input checked="" type="checkbox"/> manager	<input checked="" type="checkbox"/>	<input type="checkbox"/>	<input type="checkbox"/>	<input type="checkbox"/>	<input checked="" type="checkbox"/>	<input type="checkbox"/>	<input type="checkbox"/>
<input checked="" type="checkbox"/> all	<input type="checkbox"/>	<input type="checkbox"/>	<input type="checkbox"/>	<input type="checkbox"/>	<input type="checkbox"/>	<input checked="" type="checkbox"/>	<input type="checkbox"/>

Apply

Done Adblock

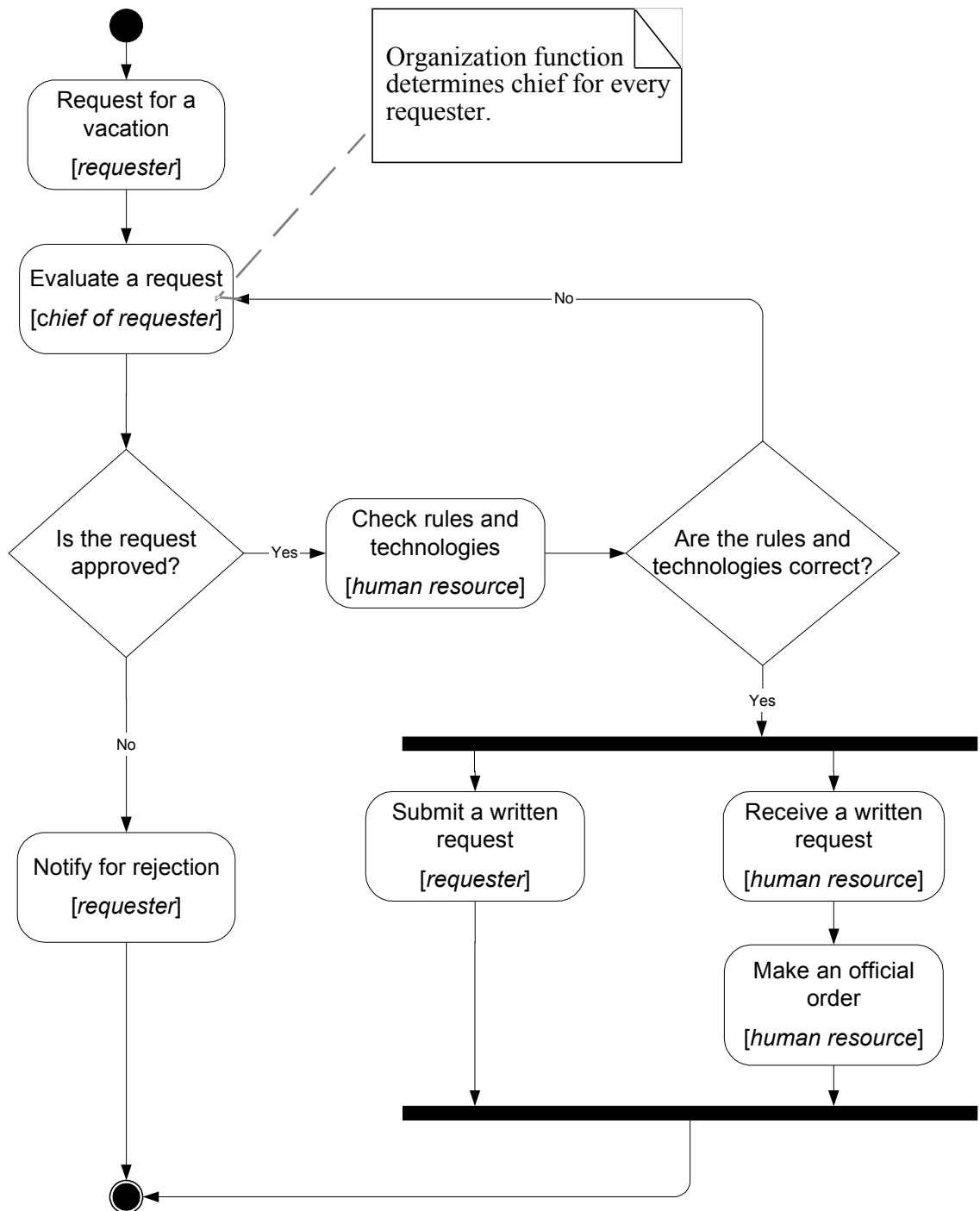
Vacation demo

Description:

An employee requests for vacation. The boss accepts or declines the request. If request was rejected, the employee receives notification and business process ends. If request was approved, the human resource inspectors receive task “check rules and technologies”. Human resource inspector checks business process data. If check result is negative, the business process returns to the “evaluate a request” state (the cycle example). Boss accepts or declines the request. If the check result is positive, the business process sends task for hardcopy request submission and official order issuing. Employee receives task “submit the written request for a vacation” to the human resource department”, the human resource inspector receives task “receive a written request from employee” concurrently. Upon completion this task the human resource inspector receives next task “make an official order”. After all these tasks are done, the business process ends.

Note. Organization function determines boss for every actor. Actors with login names starting with “g” have boss *julius*, the others – *nero*.

The business process graph:



How to play the business process:

1. Log in as member of *staff* group (e.g. *marcus*)
2. Click on the menu item "Process Definitions"
3. Click "Start" for "vacation demo"
4. Start form will appeared. In this form:
 - Enter the time interval for the vacation
 - Fill the fields «reason» and «comment»
 - Click "OK"

The new instance of "vacation demo" business process will start and boss receives the "evaluate a request" task. The boss of *marcus* is *nero*

5. Click "Logout"
6. Login as *nero*
7. Click on "evaluate a request" task

8. Choose “accept”, fill the «boss comment» and click «OK»
9. Click “Logout”
10. Login as member of the “human resource” group. (*cleopatra*)
11. Click “check rules and technologies” task
12. Choose “correct”, fill the “human resource inspector comment” and click “OK”
13. Click on “Receive a written request” task
14. Click “OK”
15. Login as *marcus*. Click on “Submit a written request” task and then click “OK”
16. Login as *cleopatra*. Click on “Make an official order” task.
17. The form will appeared. In this form:
 - Fill the “Official order number” field
 - Fill the “Official order date” field
 - Click “OK”

The business process ends

Business trip demo

Note. This process is quite complex. This documentation contains only short description and the business process graph.

The short description:

A manager sends an employee to a business trip. The employee receives notification. If the business trip is local, the business process ends. If business trip type is “to another region”, a human resource inspector receives task “make an official order”. The employee receives task “sign an order” and human resource inspector receives a task “receive a signature on the order” concurrently. Employee receives task “receive a business trip warrant” and inspector receives a task “give a business trip warrant”. Bookkeeper issues and employee receives the business trip money. After employee returns from the business trip, employee submits and bookkeeper receives the business trip financial report. The business process ends.

The business process graph:

